

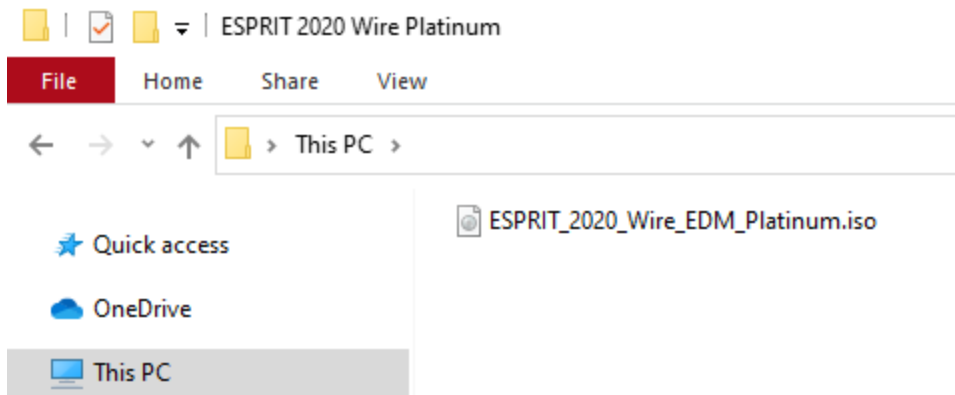
Using ESPRIT Tutorials from Mounted ISO or USB Drive

USING A MOUNTED ISO IMAGE

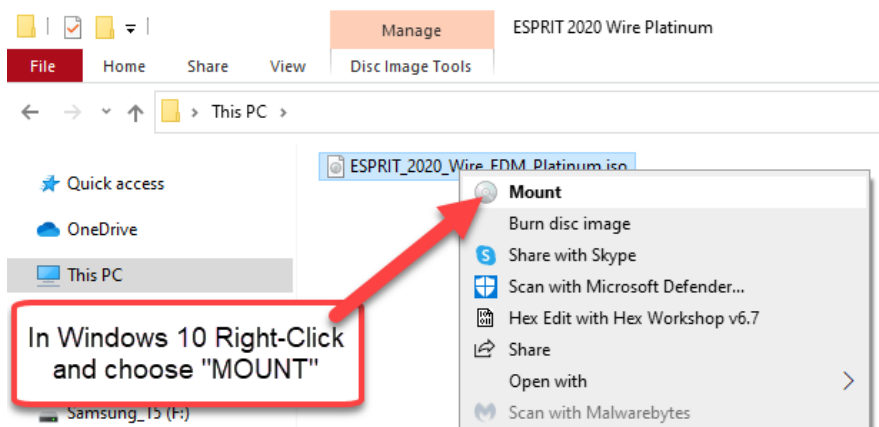
- 1) Download the ISO image onto your PC or USB device.

NOTE: If you are running Windows 7 this free utility ([VirtualClone Drive Utility](#)) will install Virtual Clone software and let you follow the instructions below to mount the ISO image as if it were a DVD drive to allow you to view the Tutorials without burning physical DVD media. **This is NOT NEEDED for Windows 10.**

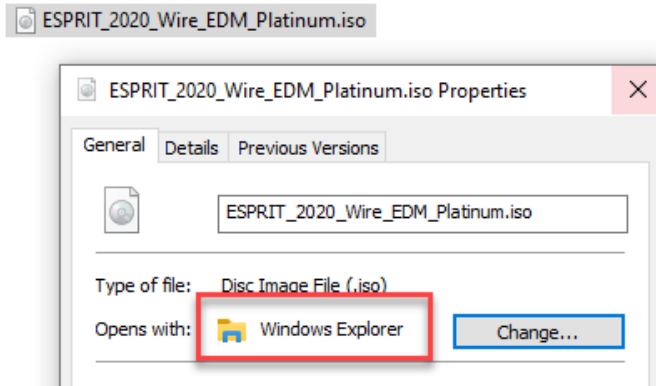
- 2) Open Windows/File Explorer and browse for the ISO Image.



- 3) In Windows 10 or 7, right-click the ISO Image and choose MOUNT. In Windows 7 you will have a different ICON for “Mount” which will look like a Cow.

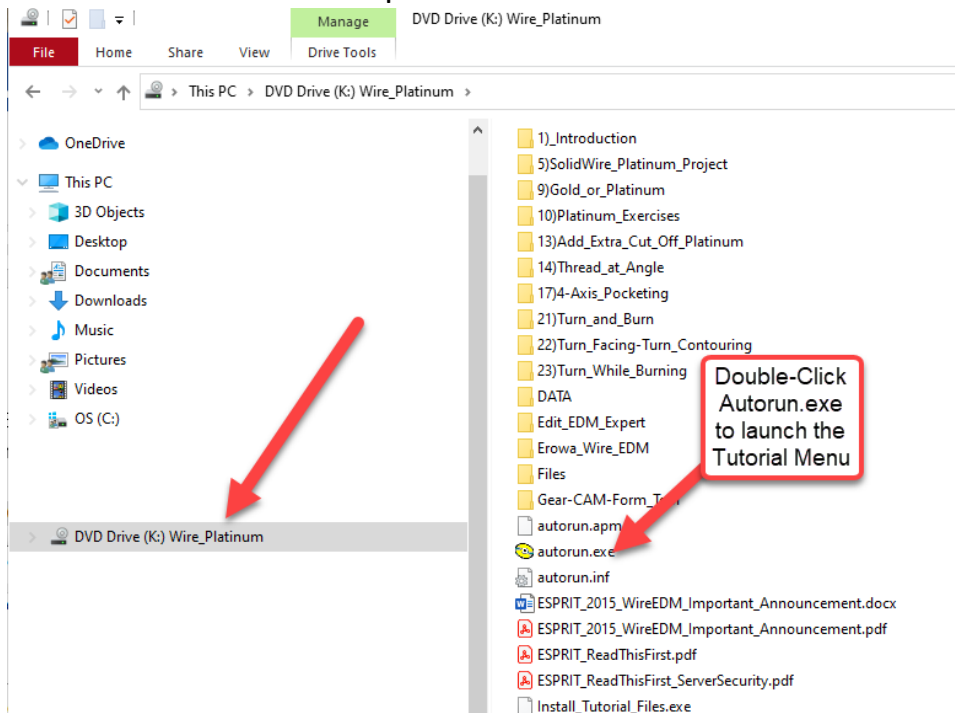


NOTE: If “MOUNT” is not available when you right-click then that means that some other App/Program is using the .ISO file extension. You can correct this by doing a right-click on the ISO Image and choose “PROPERTIES”. Use “CHANGE” to change “Open With” to “Windows Explorer” and then try to MOUNT the ISO Image again.



- 4) Inside File Explorer choose the Mounted Drive in the list on the left. Double-click the file AUTORUN.EXE to open the Tutorial Main Menu.

NOTE: EVERY ISO Image will have the SAME “Autorun.exe” file that you will need to double-click to open that Tutorial’s Main Menu.

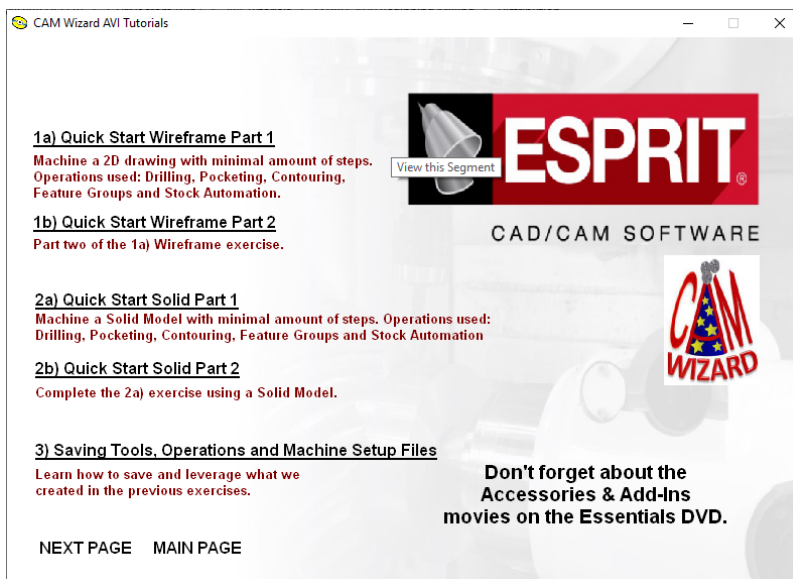


“Autorun.exe” will open a Main Menu like this:



Links will either open other Pages in the Menu or could open PDF or Image supporting documents.

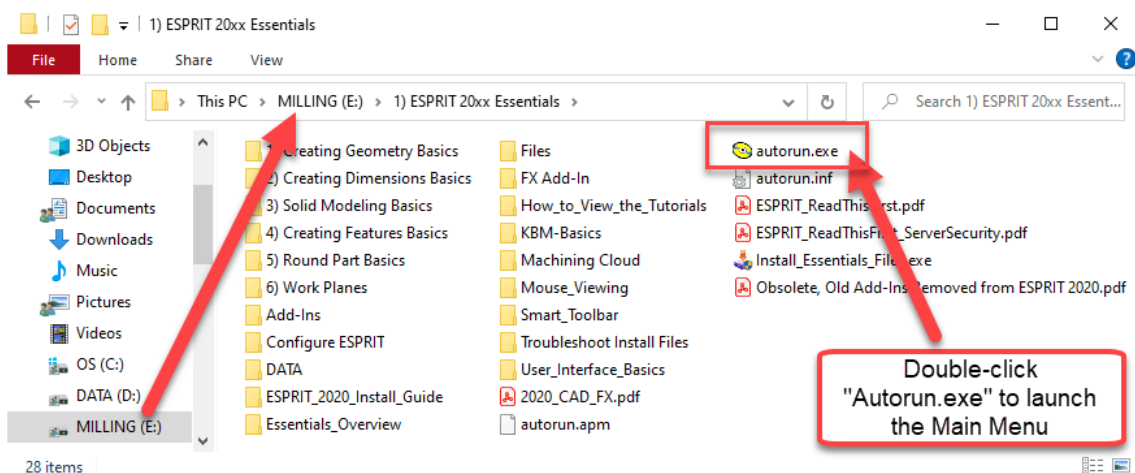
Links with descriptions such as shown on this page below will open the Movie in your Default Browser. Each Movie Link will open a new Tab in your Browser with the movie. Close the Tab in your Browser to close the Movie.



USING A SUPPLIED USB DRIVE INSTEAD OF DVDs



- 1) Insert the USB Drive with the Tutorials into your computer.
- 2) Open Windows/File Explorer and browse for the USB Drive.
- 3) Double-click the file "AUTORUN.EXE" to launch the Tutorial Main Menu.



"Autorun.exe" will open a Main Menu like this:



Links in the Main Menu will either open other Pages in the Menu or could open PDF or Image supporting documents.

Links with descriptions such as shown on this page below will open the Movie in your Default Browser. Each Movie Link will open a new Tab in your Browser with the movie. Close the Tab in your Browser to close the Movie.

The screenshot shows a browser window with the following content:

- 1a) Quick Start Wireframe Part 1**
Machine a 2D drawing with minimal amount of steps. Operations used: Drilling, Pocketing, Contouring, Feature Groups and Stock Automation.
- 1b) Quick Start Wireframe Part 2**
Part two of the 1a) Wireframe exercise.
- 2a) Quick Start Solid Part 1**
Machine a Solid Model with minimal amount of steps. Operations used: Drilling, Pocketing, Contouring, Feature Groups and Stock Automation
- 2b) Quick Start Solid Part 2**
Complete the 2a) exercise using a Solid Model.
- 3) Saving Tools, Operations and Machine Setup Files**
Learn how to save and leverage what we created in the previous exercises.

Navigation links: [NEXT PAGE](#) [MAIN PAGE](#)

ESPRIT CAD/CAM SOFTWARE

Don't forget about the Accessories & Add-Ins movies on the Essentials DVD.

PROBLEMS?

If you have any trouble with the Tutorials you can go to our “Problems” page:

<https://www.thecamwizard.net/problems>



[SHOP ONLINE](#) [ESPRIT 20XX](#) [BUNDLES](#) [UPDATES](#) [ESPRIT TNG](#) [PROBLEMS?](#) [LINKS](#) [BLOG](#) [CONTACT US](#)

Problems?

