



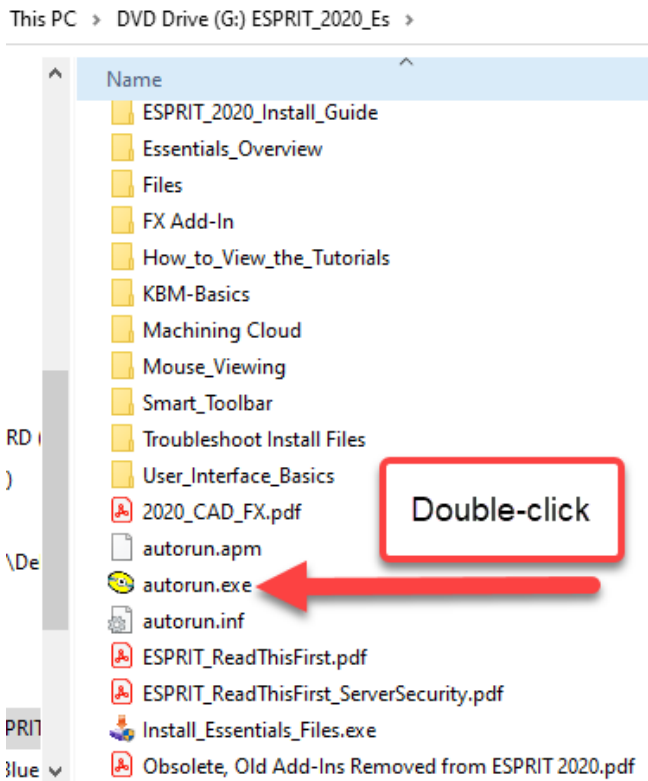
## Here are some helpful hints about viewing our ESPRIT tutorial(s):

**USING DVDs:** Insert the DVD and when asked allow "Autorun.EXE" to open. Otherwise, open Windows File Explorer and browse for the DVD Drive and double-click "Autorun.EXE" as shown below.

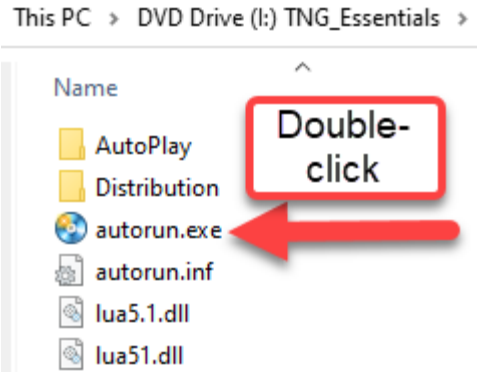
**IMPORTANT FOR ISO IMAGES:** This link in the email you received will describe [HOW TO MOUNT AND USE ISO IMAGES](#). Refer back to your email with the Links at any time for these instructions. You can either download or print the document.

**INSERTING THE DVD OR MOUNTING THE ISO IMAGE.** After you insert the DVD or Mount the ISO Image you need to use Windows File Explorer to select the file **AUTORUN.EXE** on the ROOT of the DVD or Mounted ISO Image as shown here to launch the Main Menu of the Tutorial. All movies can be opened from the Main Menu:

### ESPRIT 20xx Tutorials



### ESPRIT TNG Tutorials



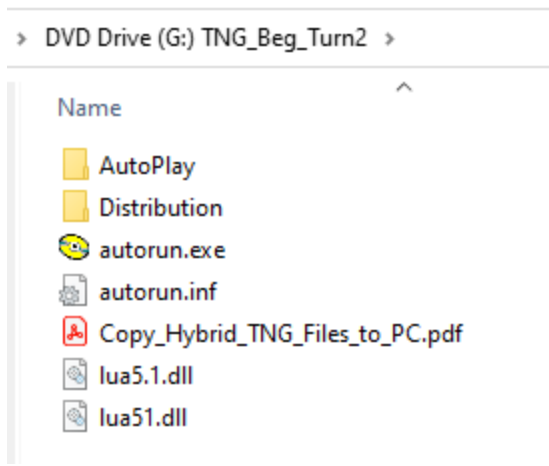
**INSTALL FILES BUTTON.** Every ESPRIT Tutorial will install the ESPRIT files used with the Tutorial. This is a onetime process only needed to get the supporting ESPRIT files onto your PC. The actual movies will remain on the DVD/ISO Image. If you get an error when installing the files this is usually the result of security settings on your PC. You can also browse the DVD/ISO and copy the contents of the "FILES" folder into the following folder:

**ESPRIT 20xx Tutorials:** C:\Users\[??USERNAME??]\Documents\DP Technology\ESPRIT\Data

**ESPRIT TNG Tutorials:** C:\Users\Public\Documents\D.P.Technology\ESPRIT TNG

-TURN OVER-

**HYBRID TNG BUNDLE FILES:** If you have a Hybrid TNG Bundle or a combination of TNG Beginning Milling and/or TNG Beginning Turning you have converted TNG Files to use with the ESPRIT 20xx advanced Tutorials. Instructions on how to copy the files from DISK 2 of the TNG Beginning Milling or TNG Beginning Turning Tutorial to your PC as shown here.



**WORKING WITH THE MOVIES:** These movies are designed for you to interact with each movie alongside your ESPRIT software. Dual Monitors a second laptop or PC are great for watching the movies while using your ESPRIT.

Watch a portion of a Tutorial, pause the Tutorial, minimize the tutorial, open ESPRIT and the same file and do the portion of the tutorial you have just watched. You will use the files installed using the INSTALL FILES button. Continue switching back and forth between the Tutorial and ESPRIT.

*All material found on the ESPRIT tutorial DVD are copyrighted property of CAM Wizard, LLC and cannot be copied or otherwise reproduced in any form without expressed written permission from CAM Wizard, LLC. 9053 N. 175<sup>th</sup> E. Ave., Owasso, OK 74055. Phone 918-272-7373 or 800-757-0657 Fax 918-272-2315.*

## **ADDITIONAL ESPRIT SERVICES:**

### **Custom ESPRIT Post Processors**

Are you hand editing your ESPRIT programs?

ESPRIT Post Processors that produce edit-free code will help you maximize your ESPRIT investment.

With over 30 years of Post building experience including thousands of Custom ESPRIT Posts, we have the experience combined with very competitive pricing to help you produce edit-free NC Code out of ESPRIT.

### **Want specialized ESPRIT Training?**

Turn to the CAM Wizard. We offer Custom on-site ESPRIT Training.

We can teach you how to use ESPRIT using your parts and methods while teaching you valuable tips

and tricks that will speed up the time from sitting in front of ESPRIT to making chips or sparks.

**[www.thecamwizard.net](http://www.thecamwizard.net)**

