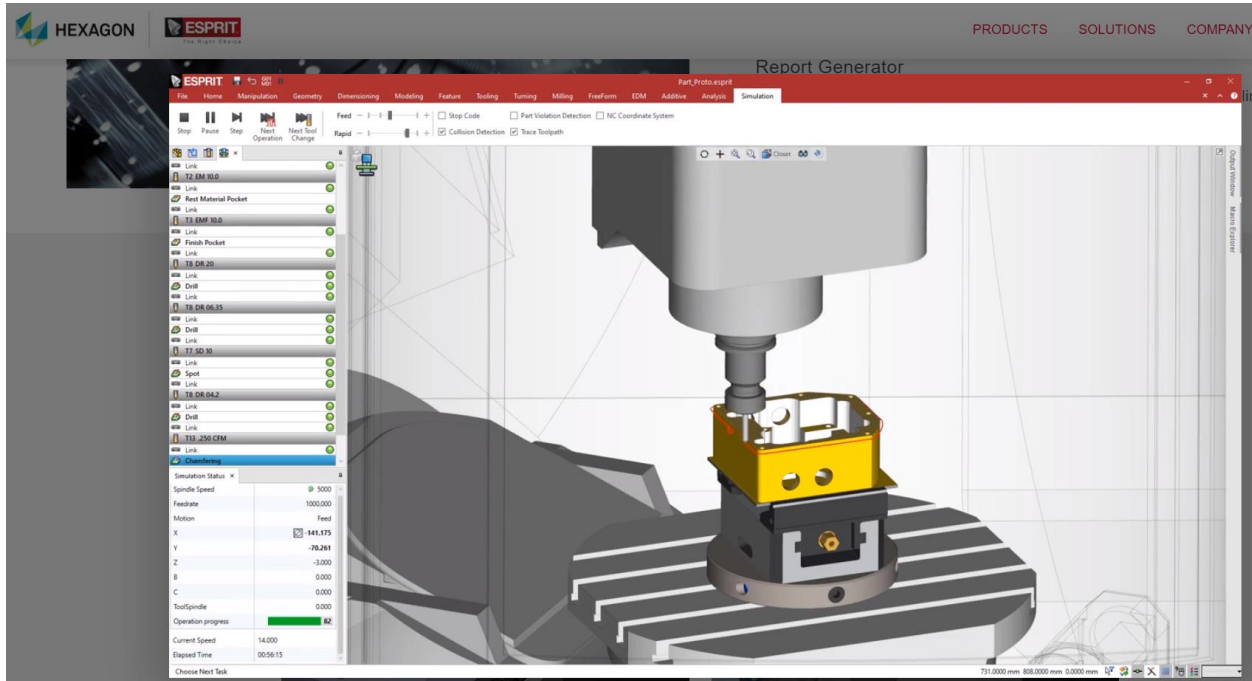


# ESPRIT TNG Early Adopter Program (EAP)

**Introduction:** You may have received a flyer from ESPRIT about the "New ESPRIT" or seen a different looking ESPRIT in movies or images on the [ESPRITWeb](#) than the ESPRIT 20xx software that you are using. This is ESPRIT TNG.



Here is an overview of ESPRIT TNG.

**Please keep these comments confidential.** Nothing that I am sharing with you has been endorsed or approved by Hexagon ESPRIT and are my comments alone (Randy Rauh).

**History:** There have been versions of ESPRIT TNG (The Next Generation) around since 2013. So why don't more ESPRIT Users know about TNG? The issue is that not all of the functionality of ESPRIT 2000 Series (E20xx) has been available in TNG. The status of current development for TNG as of 5.1 (my opinion only) is:

**Wire EDM:** All functionality is done.

**Milling:** All functionality from 2-Axis through 5-Axis is done.

**Turning/MillTurn:** All 2-Axis functionality is done. Live C-Y, Tilted B-Axis Heads and full 5-Axis MillTurn is done. Main/Sub Part Transfers are done. 2-Channel Sync with Automatic Sync of Operations and one touch Sequential or Production Mode is a major enhancement. 3+ Channel for Swiss has NOT been added yet.

**Early Adopter Program:** ESPRIT customers with current SMC (Maintenance) can sign up and get Licenses of TNG\* to match their E20xx Licenses. There is no cost for this as it is part of your SMC. TNG installs completely independent to E20xx so both can coexist on the same PC.

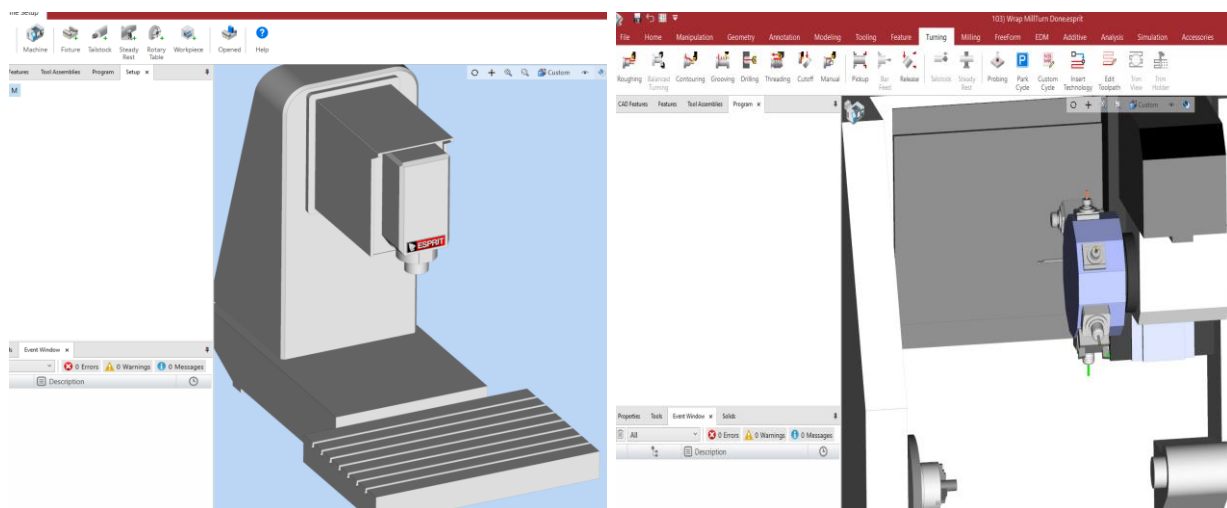
\*NOTE: This does not add extra Licenses of ESPRIT. If you own one License of ESPRIT you can open ESPRIT 20xx and TNG on the SAME PC.

**Existing E20xx .ESP Files:** ESPRIT TNG can open existing legacy E20xx .ESP files with the exception of the old Trochoidal Roughing and Rest Machining (not needed in TNG). When opening E20xx .ESP files you will be asked to either select an existing TNG Machine (more on that next) or open the file without toolpath. All Tools and Features will come into TNG.

**Existing E20xx .EMS Machine Setup or Template Files (.EST):** ESPRIT TNG does not directly read or use anything from existing E20xx .EMS or .EST files. There is a separate program that currently is part of the TNG installation called the Machine Tool Builder (MTB). This is the new Machine Setup tool to configure TNG Machines, Holders and Fixtures.

There is a process within MTB that will convert ESPRIT 20xx .EMS data and STL models into a MTB Machine. However, MTB requires much more in the way of details about Axes, Travel Limits and other kinematic information than most E20xx Users do not have in their .EMS files. Therefore, development of new MTB Machines for your specific Machine in place of your E20xx .EMS file is required.

The alternative is to use the generic Milling, Turning and Wire EDM MTB Machines that install with TNG.



**Existing .ASC Post Processors:** All existing .ASC Post Processors will require extensive modifications for use with TNG. Your existing Post can be copied and modified to not affect your ESPRIT 20xx Post.

This is a Service that we will offer on a per-Post/Machine basis. There are several new Sections that must be added to existing Posts to work in TNG.

Most Factory Posts (.PST) will already have TNG .PST Posts and MTB Machines available in your Digital Package. Others (such as Swiss) will be available when supporting functionality is added.

For complex open sourced .ASC Posts like Multi-Function MillTurn machines or 5-Axis Machines we may recommend that new Factory Posts for TNG be purchased instead of the major Post modifications and MTB work needed to convert E20xx .ASC Posts and .EMS Machine Setups to TNG. We will provide you with options.

**Conclusions:** TNG is the future of ESPRIT. All new ESPRIT functionality is being added to TNG. E20xx is in maintenance mode (my term only) in that only minor additions will be made to E20xx in the future.

For the time being there will be new E20xx releases in parallel with TNG Development. There is a new ESPRIT 2021 release available, and I expect an ESPRIT 2022 etc... for some time to come. Companies buying ESPRIT now may start off with TNG as their only product where applicable while existing E20xx Users need to plan their migration from E20xx to TNG. Joining the Early Adopter Program is the first step in this migration.

### **TNG Tutorial Information:**

**Essentials for TNG:** This Bonus Essentials Tutorial is DONE.

**Beginning Milling for TNG:** TNG Beginning Milling is DONE.

**Beginning Turning for TNG:** TNG Beginning Turning is DONE.

**Hybrid TNG Tutorials:** The **Beginning Milling and Beginning Turning Tutorials** for TNG include converted files to use with the following existing ESPRIT 20xx advanced Tutorials to allow you to use the same files in TNG while watching these E20xx Tutorials:

Advanced Rotary Milling  
Advanced Turning & MillTurn  
B-Axis Master Class  
FreeForm 3-Axis  
FreeForm 5-Axis